

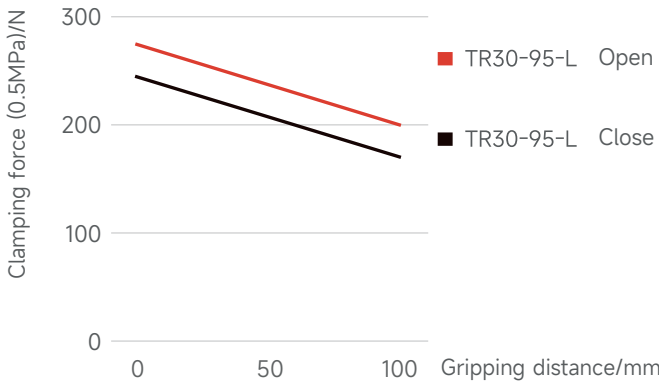
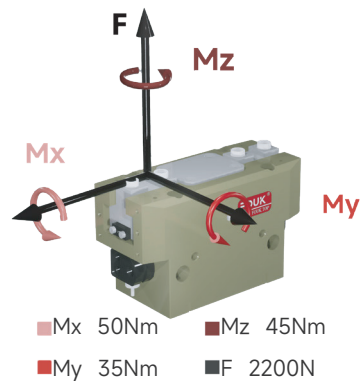
Parallel gripper long stroke series FOUK-TRL

TR30-95-L

TR30-95-L

Static load-bearing torque

Gripping force curve



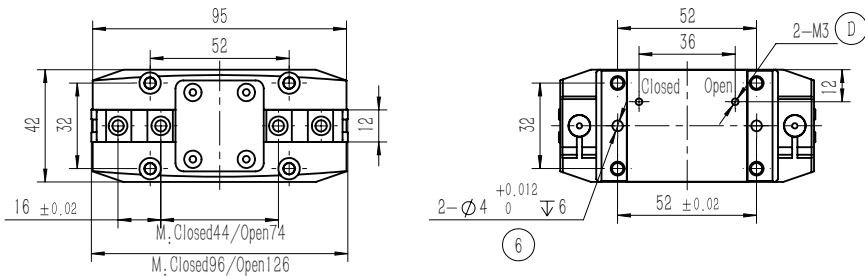
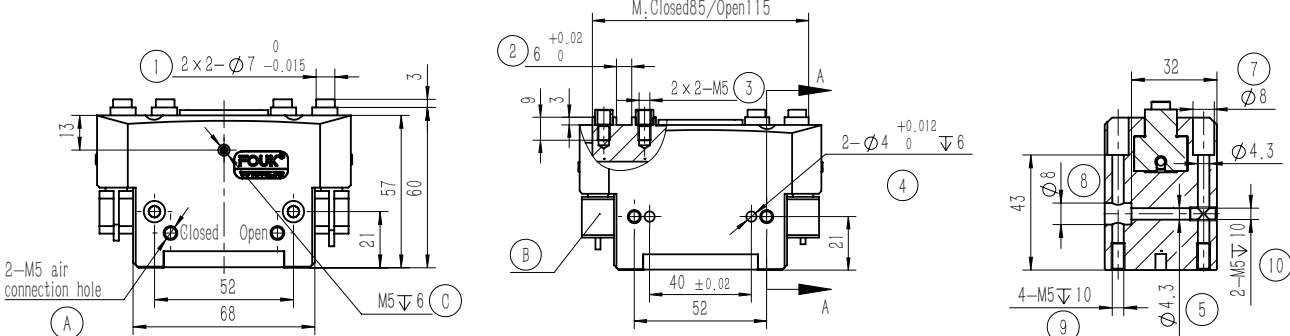
TR 30 - 95 - L - B - P - H

- Serial No. TR T-shaped parallel gripper
- Cylinder bore
- Shell length
- Stroke extension
- Ventilation at bottom / Ventilation on the side
- Dust cover IP64 / Without dust cover
- High temperature resistance
H -5~240°C
/ 0~60°C

Inductive proximity sensor

- IPSD-2NS-0823-L3 Inductive, NPN, 3-core3m
- IPSD-2PS-0823-L3 Inductive, PNP, 3-core3m

*Two sensors are required for each gripper. For the detailed monitoring of two positions, see the sensor appendix.



- ① Gripping finger location pin bushing (standard)
- ② Gripping finger positioning groove
- ③ Mounting hole of gripping finger
- ⑤ ⑦ ⑧ ⑨ ⑩ Gripper mounting hole
- ④ ⑥ Gripper positioning hole
- A Compressed air connection port
- B Location of inductive proximity sensor
- C Positive-pressure air blowing hole/grease injection hole
- D Bottom ventilation hole (version-B)

Product attributes	TR30-95-L		Unit
Single stroke	15		mm
Product weight	0.6		kg
Maximum allowable gripping distance	100		mm
Theoretical maximum gripping force: opening/closing	55P/49P		N
Opening/closing time	1.2		kg
Workpiece weight	0.07/0.07		s
Gas consumption of single opening and closing cycle	0.25		L
			P: Compressed air pressure [bar] Gas consumption: volume of gas consumed at normal pressure (0.5MPa)
Repeated gripping accuracy/mm	± 0.02	Specification of air connection port	M5
Operating air pressure range/bar	3~7	Temperature range of application/°C	-5~60
IP rating	40	Maximum allowable single-finger gripping weight/kg	0.15

TR30-95-L-P Dust-proof

Dust-proof module, IP64 for the positive-pressure air blowing hole after it, is connected to the compressed air of 0.05-0.10MPa, otherwise, IP50

TR30-95-L-B Ventilation at bottom

