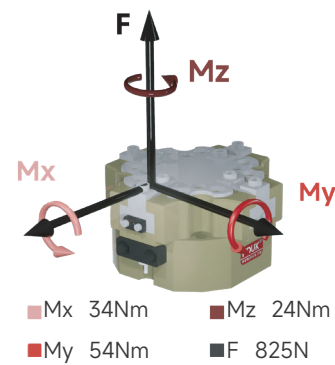


## Parallel gripper long stroke series FOUK-TF

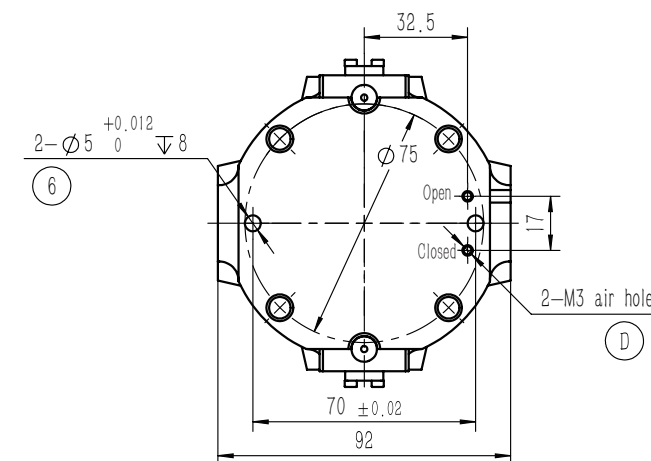
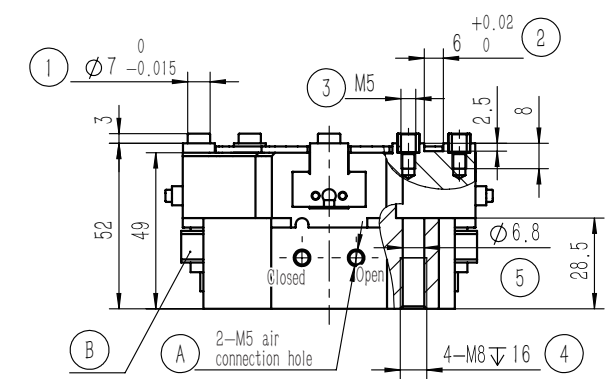
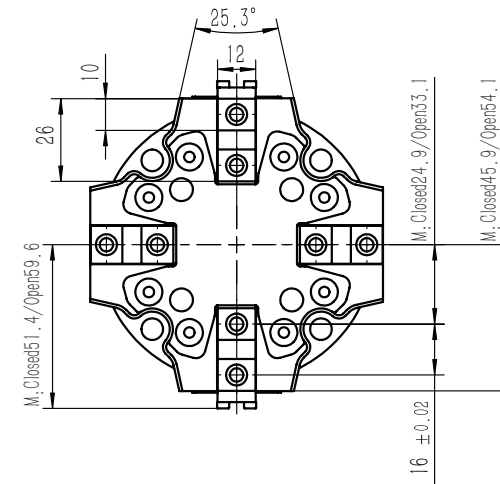
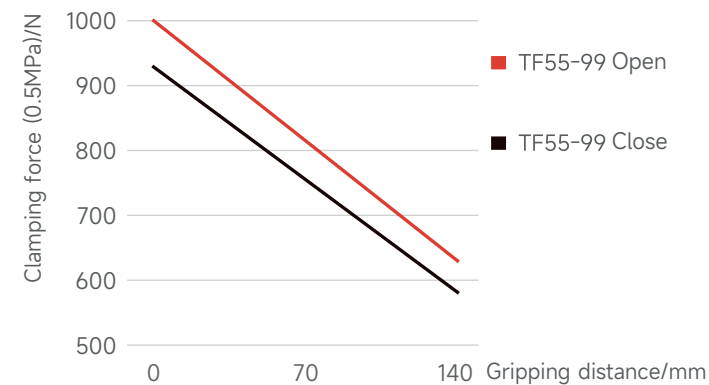
## TF55-99

**TF55-99**



## Static load-bearing torque

## Gripping force curve



- ① Gripping finger location pin bushing (standard)
- ② Gripping finger positioning groove
- ③ Mounting hole of gripping finger
- ④ ⑤ ⑥ Gripper mounting hole
- ⑦ Gripper mounting and positioning
- ⑧ Compressed air connection port
- ⑨ Location of inductive proximity sensor
- ⑩ Positive-pressure air blowing hole/grease injection hole
- ⑪ Bottom ventilation hole (version-B)

TF 55 - 99 - B - C28 - H

Serial No.	Cylinder bore	Maximum shell diameter	Ventilation at bottom	Length of push rod	High temperature resistance										
TF	Four-finger gripper		/ Ventilation on the side	<table border="1"> <tr> <td>C28</td> <td>28mm</td> </tr> <tr> <td>C38</td> <td>38mm</td> </tr> <tr> <td>/</td> <td>Without push plate</td> </tr> </table>	C28	28mm	C38	38mm	/	Without push plate	<table border="1"> <tr> <td>H</td> <td>-5~240°C</td> </tr> <tr> <td>/</td> <td>0~60°C</td> </tr> </table>	H	-5~240°C	/	0~60°C
C28	28mm														
C38	38mm														
/	Without push plate														
H	-5~240°C														
/	0~60°C														

## Inductive proximity sensor

IPSD-2NS-0823-L3	Inductive, NPN, 3-core3m
IPSD-2PS-0823-L3	Inductive, PNP, 3-core3m

\*Two sensors are required for each gripper. For the detailed monitoring of two positions, see the sensor appendix.

Product attributes	TF55-99		Unit
Single stroke	8		mm
Product weight	1.1		kg
Maximum allowable gripping distance	140		mm
Theoretical maximum gripping force: opening/closing	200P/186P		N
Workpiece weight	4.5		kg
Opening/closing time	0.04/0.04		s
Gas consumption of single opening and closing cycle	0.3		L
P: Compressed air pressure [bar] Gas consumption: volume of gas consumed at normal pressure (0.5MPa)			
Repeated gripping accuracy/mm	± 0.02	Specification of air connection port	M5
Operating air pressure range/bar	3~7	Temperature range of application/°C	-5~60
IP rating	40	Maximum allowable single-finger gripping weight/kg	0.75

### TF55-99-C28 Pushing

The length A of the push rod can be of the standard version or the extended version, with loading function, and the minimum thrust of the push plate is 16N.

### TF55-99-B Ventilation at bottom

