

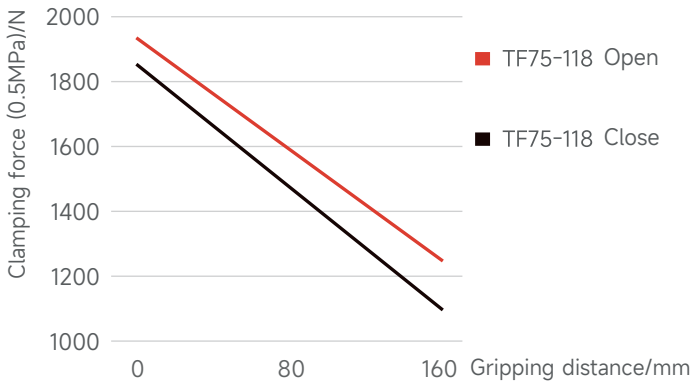
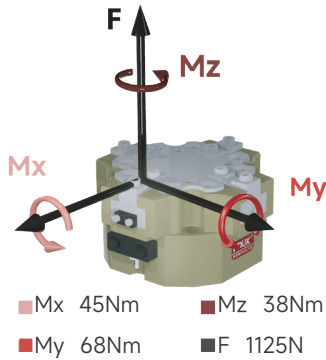
Parallel gripper long stroke series FOUK-TF

TF75-118

TF75-118

Static load-bearing torque

Gripping force curve



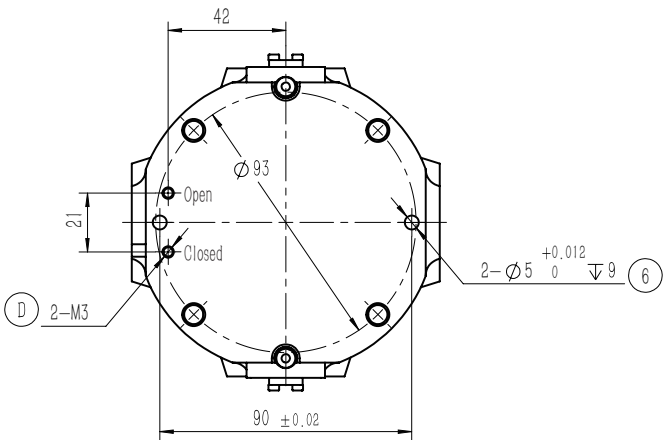
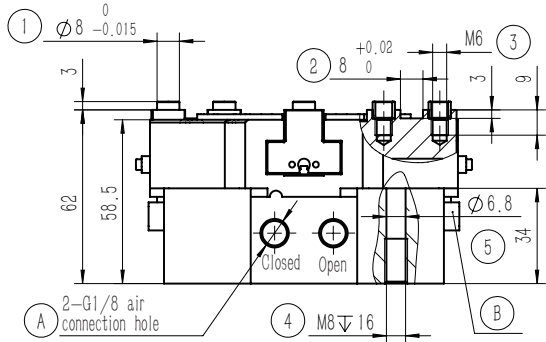
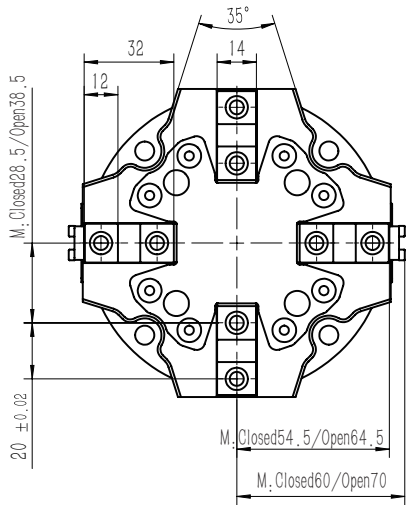
TF 75 - 118 - B - C30 - H

Serial No.	Cylinder bore	Maximum shell diameter	Ventilation at bottom	Length of push rod	High temperature resistance
TF Four-finger gripper			/ Ventilation on the side	C30 30mm C40 40mm / Without push plate	H -5~240°C / 0~60°C

Inductive proximity sensor

IPSD-2NS-0823-L3	Inductive, NPN, 3-core3m
IPSD-2PS-0823-L3	Inductive, PNP, 3-core3m

*Two sensors are required for each gripper. For the detailed monitoring of two positions, see the sensor appendix.



- ① Gripping finger location pin bushing (standard)
- ② Gripping finger positioning groove
- ③ Mounting hole of gripping finger
- ④ ⑤ ⑥ Gripper mounting hole
- ⑥ Gripper mounting and positioning
- A Compressed air connection port
- B Location of inductive proximity sensor
- C Positive-pressure air blowing hole/grease injection hole
- D Bottom ventilation hole (version-B)

Product attributes	TF75-118	Unit
Single stroke	10	mm
Product weight	1.6	kg
Maximum allowable gripping distance	160	mm
Theoretical maximum gripping force: opening/closing	386P/370P	N
Workpiece weight	8.5	kg
Opening/closing time	0.1/0.1	s
Gas consumption of single opening and closing cycle	0.8	L

P: Compressed air pressure [bar]

Gas consumption: volume of gas consumed at normal pressure (0.5MPa)

Repeated gripping accuracy/mm	± 0.02	Specification of air connection port	G1/8
Operating air pressure range/bar	3~7	Temperature range of application/°C	-5~60
IP rating	40	Maximum allowable single-finger gripping weight/kg	1

TF75-118-C30 Pushing

The length A of the push rod can be of the standard version or the extended version, with loading function, and the minimum thrust of the push plate is 100N.

TF75-118-B Ventilation at bottom

