

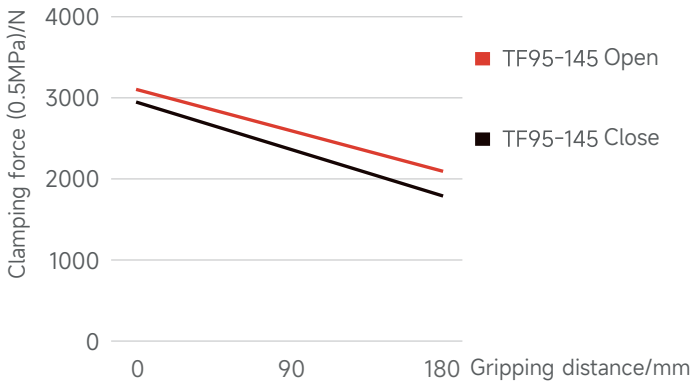
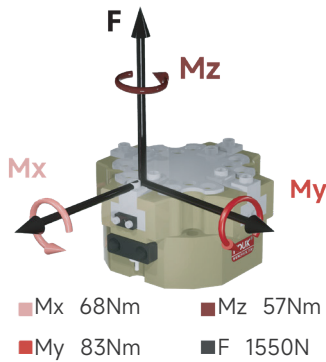
Parallel gripper long stroke series FOUK-TF

TF95-145

TF95-145

Static load-bearing torque

Gripping force curve



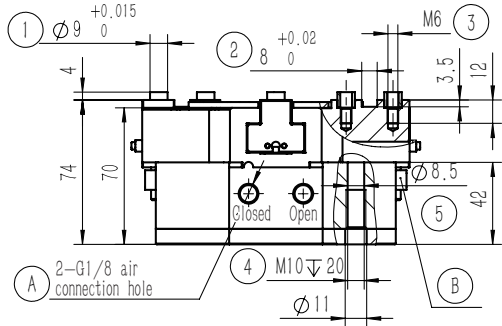
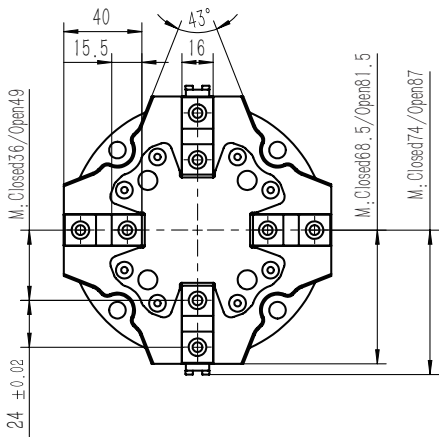
TF 95 - 145 - B - C40 - H

Serial No.	Cylinder bore	Maximum shell diameter	Ventilation at bottom	Length of push rod	High temperature resistance
TF Four-finger gripper			/ Ventilation on the side	C40 40mm C50 50mm / Without push plate	H -5~240°C / 0~60°C

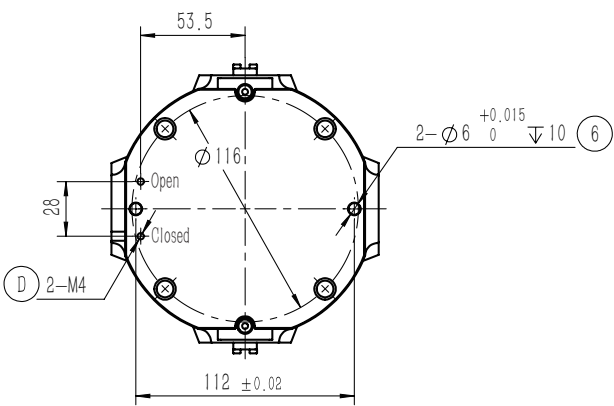
Inductive proximity sensor

IPSD-2NS-0831-L3	Inductive, NPN, 3-core3m
IPSD-2PS-0831-L3	Inductive, PNP, 3-core3m

\*Two sensors are required for each gripper. For the detailed monitoring of two positions, see the sensor appendix.



- ① Gripping finger location pin bushing (standard)
- ② Gripping finger positioning groove
- ③ Mounting hole of gripping finger
- ④ ⑤ ⑥ Gripper mounting hole
- ⑥ Gripper mounting and positioning
- A Compressed air connection port
- B Location of inductive proximity sensor
- C Positive-pressure air blowing hole/grease injection hole
- D Bottom ventilation hole (version-B)



TF95-145-C40 Pushing

TF95-145-B Ventilation at bottom

The length A of the push rod can be of the standard version or the extended version, with loading function, and the minimum thrust of the push plate is 220N.

